

Module 7 LO3

Cartilaginous Joint

Dr. Lisa Brinn

lbrinn@fiu.edu

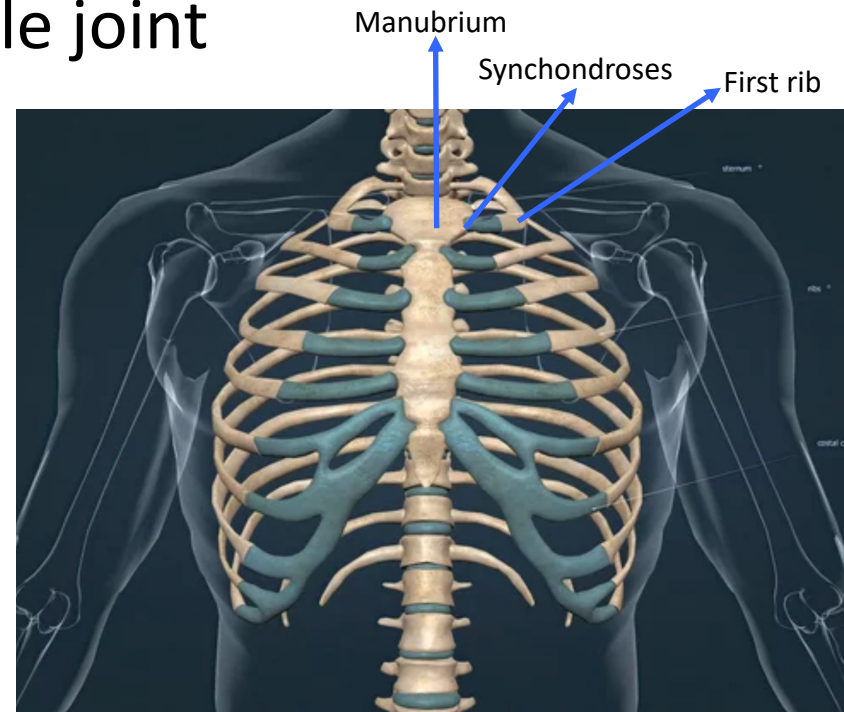
[Video Recording Link](#)

3. Cartilaginous Joints

- Solid connective tissue
 - Allows little (amphiarthrosis) or no movement (synarthrosis)
- Articulating bones are tightly connected by:
 - Hyaline cartilage
 - Fibrocartilage
- Types:
 - A. Synchondroses
 - B. Symphyses
 - C. Epiphyseal cartilage

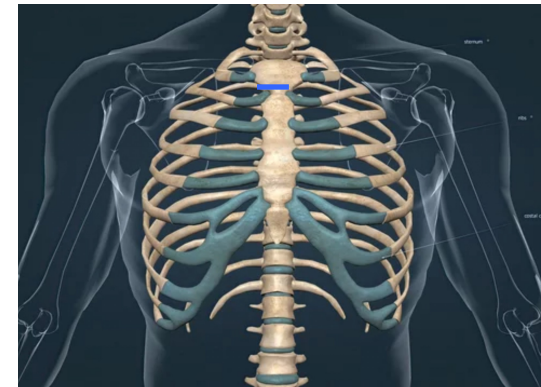
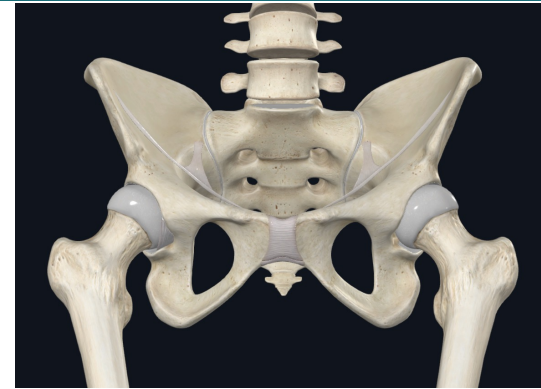
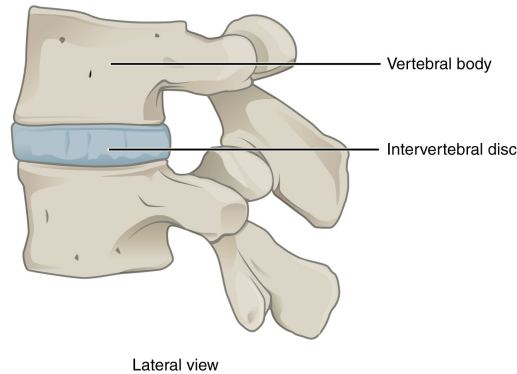
A. Synchondroses

- Not to get confused with Syndesmosis
- Hyaline cartilage
- Slightly movable to immovable joint
- Example:
 - First rib with manubrium



B. Symphyses

- Singular: symphysis
 - Fibrocartilage
- All occur in the midline of the body
- Examples:
 - Pubic symphysis
 - Manubrium and body of sternum
 - Intervertebral joints
 - Intervertebral disc made of fibrocartilage
 - Provide limited range of motion
 - Important shock-absorbing pad between vertebral bodies



C. Epiphyseal Cartilage

- Actual growth centers during endochondral bone formation
- Not a joint associated with movement
- Example:
 - Epiphyseal growth plate - Connects the epiphysis to diaphysis
- Function:
 - Immoveable joint
 - When bones stop growing – bone replaces hyaline cartilage
 - Epiphyseal cartilage becomes a synostosis

